

SCALEMASTER®

Water Treatment Product Guide

Effective January 2018 • UK and Europe Edition



ISO 9001:2015
ISO 14001:2015
OHSAS 18001:2007



INTRODUCTION

Scalemaster® has been a leading supplier of quality water treatment products for over 30 years. From the development of our first 'electrolytic' in-line limescale inhibitor in 1983 (often seen as the industry standard), to heating system chemicals manufactured to the latest specifications, we have grown our portfolio to cover all aspects of water treatment in both domestic and commercial applications. To compliment our traditional scale and corrosion products, we now offer a comprehensive range of water filtration, softening, reverse osmosis and ultra violet disinfection units, all manufactured to the highest quality to give long term protection and peace of mind.

We're also doing our bit to help protect the environment. We've ensured that all our water softeners are amongst the most economical and efficient on the market (page 10). We were the first company to produce a more environmentally-friendly range of premium heating-system chemicals in 250ml bottles - the Scalemaster® Gold range will still treat a full 100 litre (nominal 10 radiators) system (page 6). We are pleased to have achieved ISO14001:2004 accreditation in 2014, demonstrating our ongoing commitment to the use of materials from sustainable sources and manufacturing procedures which minimise impact on the environment.

As we continue to be at the forefront of water treatment solutions, Scalemaster® products can now be found in safari parks, hotels, dentists, vets, airports and national chains of restaurants and coffee shops. We export to Europe, the USA and from this year you can even find Scalemaster® water softeners in India!

I hope you find our new product guide useful and thank you for your continued support.



Dr Carl Jasper CEng
Director

THE NEED FOR WATER TREATMENT

In May 2006, for the first time, the Domestic Heating Compliance Guide (Part L of the Building Regulations) specified a requirement for the provision of some form of water treatment to prevent limescale precipitation in water heating applications in hard water areas. This was in response to findings that boilers typically lost 6% to 7% efficiency over the first few weeks of operation and up to 24% efficiency over the life of the boiler.

Subsequent guidance also specified the requirement for chemical cleansing and treatment of the water in central heating systems to prevent a reduction in heat transfer efficiency of up to 6%. In the near future magnetic sludge filters, which trap sludge and maintain system efficiency, look set to become mandatory.

Scalemaster® water treatment products help meet the requirements of this legislation whilst delivering savings from reduced fuel usage.

All Scalemaster® products meet current safety and performance standards where appropriate – Installers should ensure that installations comply with the Water Supply (Water Fittings) Regulations 1999 and other relevant by-laws.



**EXTENSIVE
STOCK**



**SPEEDY
DELIVERY**



**EXPERT
ADVICE**



**BRITISH
MANUFACTURER**

CONTENTS

4		Limescale Inhibitors
6		Chemicals
8		Heating System Products
10		Domestic Water Softeners
12		Domestic Water Filtration
14		Ancillaries / Scalemaster Eco / LimeStop!
16		Commercial Solutions

Original and best! Scalemaster® Electrolytic inhibitors are the only physical 'in-line' water conditioners proven* to extend boiler life typically by up to 50% by preventing limescale build-up in hard water areas.

**In independent tests carried out by Advantica (formerly part of British Gas plc).*

Make sure you fit the right product on the right job. If you're not sure, call the Technical Helpline on 07990 064096

MAGNETIC

Use - For individual appliance protection.

Location - Cold water mains supply pipe 1-2 metres before the appliance.

Service - For cold mains water applications.



01 15mm Magnetic Speedfit®

Code: 400105



02 15mm Magnetic Gold.

Code: 400143

03 22mm Magnetic Gold

Code: 400259

PRECAUTIONS

Speedfit® models **MUST** be installed with a run of at least 1m of copper pipe from a boiler and 450mm from a soldered joint to comply with BS5955-8 and John Guest fitting instructions.



Scalemaster® Fact

The internal copper mesh increases contact area with the water (Scalemaster® patent) to deliver superior performance without restricting flow.



ELECTROLYTIC

Use - For best performance and whole house protection.

Location - Cold water mains supply pipe, after stop-cock, but before the first draw off.

Service - For cold mains water applications.



04 15mm Electrolytic Speedfit®

Code: 401010



05 15mm Electrolytic Gold

Code: 401041

06 22mm Electrolytic Gold

Code: 401065

07 28mm Electrolytic Gold

Code: 402031



08 15mm Scalemaster® Mini

Code: 401096

ELECTRONIC

Use - For stored water and whole house protection.

Location - Cold water mains supply pipe, after stop-cock, but before the first draw off.

Service - For cold mains water applications.



09 15mm Digisonic DS10

Code: 404080



10 15mm Digisonic DS20

Code: 404059

11 22mm Digisonic DS20

Code: 404066

12 28mm Digisonic DS20

Code: 404097

13 15mm DS20 Expansion Kit

Code: 404110

14 22mm DS20 Expansion Kit

Code: 404127

15 28mm DS20 Expansion Kit

Code: 404134



16 15mm Digisonic DS30

- 240v 50hz Internal transformer (IP65 rating)

Code: 404004

	Speedfit®	Compression		DS10	DS20	DS30
Pipe Diameter (mm)	15	15	22	15	15/22/28	15
Max Flow Rate (litres/min)	32	32	36			
Fitting Type	Speedfit®	Compression	Compression	Wrap around	Compression	Wrap around
Body Material	Acetal	Copper	Copper			
Length (mm)	178	170	165		135/150/150	
Diameter (mm)	44	35	35		33/33/41	
Earth Bonding Required	Yes	No	No	No	No	No
Guarantee (years)	2	3	3	2	2	2
Power Required	No	No	No	15v AC/DC Transformer supplied		240v 50Hz Internal
Aerial Type				Self wound	Pre-wound	Self wound
Cable Length (m)				2m both from transformer & aerial		2

For the prevention of
limescale build-up in water
heating applications

QUALITY THAT WORKS

The original and only 'physical' in-line limescale inhibitor proven (in independent tests) to extend boiler life-time by 50% by reducing limescale build-up in hard water areas.

**Proven to save energy by
maintaining boiler efficiency.**

Beware of cheap imitations - Ask for it by name!



**Manufactured in
Great Britain**



Saving Energy!

Independent studies* have found that energy use over the life of water heating appliances can increase by up to 24% in hard water areas as the result of limescale accumulation.

Scalemaster® Electrolytic inhibitors are the only 'physical' in-line water conditioners proven to reduce limescale build-up and extend boiler life-time by up to 50%**.

*Study by the Battelle Institute carried out on behalf of the WQA

**Independent tests carried out by Advantica (previously part of British Gas plc)



Scalemaster® Fact

All Scalemaster® Chemical Inhibitors are **Buildcert Approved** and **Energy Saving Trust Endorsed**.



SCALEMASTER® PRO SYSTEM AEROSOLS

**17 SM-Pro Inhibitor**

- Treats 120 litres
- 300 ml canister
- Box Qty - 10

Code: 500522

**18 SM-Pro Cleaner & Restorer**

- Treats 120 litres
- 300 ml canister
- Box Qty - 10

Code: 500546

**19 SM-Pro Leak Sealer**

- Treats 120 litres
- 300 ml canister
- Box Qty - 10

Code: 500560

SCALEMASTER® CLASSIC HEATING SYSTEM CHEMICALS



All Scalemaster® Classic 500ml Chemicals treat 100 litre systems and come in boxes of 12.

20 SM-1 Inhibitor Code: 500010

Prevents corrosion, hard water limescale precipitation and is essential for protecting hot water heating systems and maintaining operational efficiency.

**21 SM-2 De-Scaler** Code: 500119

Restores and maintains heat exchanger efficiency in hard water areas and stops boiler noise by re-dissolving limescale precipitation on heat exchanger surfaces.

22 SM-3 System Cleaner Code: 500218

For commissioning NEW heating systems. Removes installation foulants, flux, grease and debris suspended in water by flushing. Should be left in system min 2 hours, max 2 weeks.

23 SM-4 Sludge Remover Code: 500317

For the regeneration of ESTABLISHED heating systems. Removes (black) iron oxide corrosion products by flushing and restores circulation and system performance. Should be left in system min 2 hours, max 2 weeks.

24 SM-5 Leak Sealer Code: 500324

For the internal sealing of inaccessible leaks and weeping joints. Forms a soft seal within 24 hours. Will not cause blockages in circulatory pumps or air vents.

25 SM-6 Heat Optimiser Code: 500331

Improves heat transfer efficiency. Saves up to 15% on heating costs.

26 SM-7 Biocide Code: 500348

Prevents bacterial and fungal growth. Suitable for under-floor and heat-pump systems.

27 SM-8 Power Cleaner Code: 500355

For the regeneration of sludged heating systems using powered flushing equipment. Assists in the rapid removal of iron oxide corrosion products.

SCALEMASTER® PLUS PREMIUM SYSTEM CHEMICALS



All Scalemaster® Plus 250ml Chemicals treat 100 litre systems and come in boxes of 12.



Scalemaster® Plus 5L Chemicals (items 32 and 33) treat 2000 litre systems.



Scalemaster® Plus 25L Chemicals (items 36-39).

28 100-I Inhibitor Code: 500904**29 100-C Cleanser** Code: 500928**30 100-LS Leak Sealer** Code: 500942**31 Towel Rail Antifreeze (1 litre)**

Code: 508085

32 100-I Inhibitor Code: 500980**33 100-C Cleanser** Code: 500997**34 Inhibited Antifreeze** Code: 508009**35 Over Winter Protector** Code: 508030**36 Inhibited Antifreeze** Code: 508016**37 Inhibited Antifreeze** Code: 508016**38 Over Winter Protector** Code: 508047**39 General Purpose Biocide** Code: 508160

For the pre-commissioning
of central heating systems in
accordance with BS 7593-2006



Environmentally Friendly

Scalemaster® Heating System Chemicals are specifically formulated to deliver the high level performance demanded by modern heating systems.

All Scalemaster® Heating System Chemicals are manufactured in the UK using non-hazardous formulations.



NON-CHEMICAL CORROSION PROTECTION

Oxygen plays a central role in the corrosion of central heating systems, entering in the form of dissolved oxygen via tap water used for filling. As fire dies upon the removal of oxygen so the corrosion process also ceases.

Corrosion Master significantly retards the corrosion process by raising the pH and restricting the amount of dissolved oxygen in the water. Once the dissolved oxygen has been eliminated the unit shuts down to be automatically reactivated upon the introduction of fresh oxygenated water. Additionally Zinc species that polarise existing corrosion cells are released into the water.

Product Life: The CM5 and CM10 are designed to continue working unattended for 5 and 10 years respectively and are supplied with an installation date label.

Fitting Location: Central heating system, closed circuit.

Position: Fitted in the flow or return of the heating circuit.



40 22mm Corrosion Master CM5

- Flow rate - 36 litres per minute (max)
- Compression fitting
- 135mm length x 35mm diameter
- No earth bonding required
- 2 Year warranty

Code: 600307

41 22mm Corrosion Master CM10

- Flow rate - 36 litres per minute (max)
- Compression fitting
- 170mm length x 42mm diameter
- No earth bonding required
- 2 Year warranty

Code: 600017

42 Duo Defence Pack

The Duo Defence pack contains two physical inhibitors. One to help reduce scale build up within the boiler, the other to provide protection against corrosion occurring in the heating circuit. Both products act to provide an excellent barrier against the hidden perils affecting a central heating system.

Code: 600109

i-Mag® MAGNETIC SLUDGE FILTER



Application: A safe, effective and easy solution for removing suspended black iron oxide (magnetite) from the heating system water, maintaining system efficiency and performance and extending component life-span.

Features: All stainless steel, commercial grade construction with double seal for extra security and long term reliability. (Patents applied for, product has registered design).

Location: Install in the return pipe work to the boiler.

- 5 Year Warranty
- Stainless steel construction
- Sludge capacity 280 grams
- Simple to install and maintain
- Unique 22mm isolation manifold
- Can be used as an accurate dosing point using Scalemaster® Gold 250ml Heating System chemicals
- Double seal for extra peace of mind and reliability
- Improves boiler efficiency and lifespan
- Effective sludge removal on first pass

5 YEAR
WARRANTY

Ask about the 'Green Pack' range of i-Mag® Heating System Solutions (see below)

	Product Code	Green Pack	i-Mag®	250ml Gold Buildcert Inhibitor	250ml Gold Cleanser	15mm Magnetic Inhibitor	CM5	CM10
43	601007	i-Mag®	•					
44	601014	Treatment Pack	•	•				
45	601021	Installer Pack	•	•	•			
46	601038	Green Pack 1 - 5 Year	•		•		•	
47	601069	Green Pack 1 - 10 Year	•		•			•
48	601045	Green Pack 2 - 5 Year	•		•	•	•	
49	601076	Green Pack 2 - 10 Year	•		•	•		•
50	601083	Green Pack 3	•	•	•	•		

To maintain the performance
and extend the life of domestic
central heating systems



Maintaining Efficiency!

Fitting a Scalemaster® i-Mag® Magnetic Sludge Filter helps maintain heating system efficiency – Laboratory tests have found that sludge accumulation in central heating systems typically reduces heat transfer by ~7%.



NON-ELECTRIC METERED - 'CLICK CONNECT' INSTALLATION



51 Softline® 150 Mini
Code: 900148



52 Softline® 150
Code: 900100



53 Softline® 450
Code: 900117

	Product Code	People	Height	Depth	Depth with Connector	Width	Regen Time (Approx mins)	Resin Volume (Ultra Fine)	Salt Used (Per Regen)	Water Used (Per Regen)	Inlet & Outlet	Drain & Overflow	Comes With	High Flow Option	Max Ambient Temp	Max / Min Working Pressure
Softline® 150 Mini	900148	Up to 5	470	360	417	200	12	3.3L	330 Grams	18L	3/4" BSP	1/2"	2 x 15mm Hoses	No	40 °C	6/1 Bar
Softline® 150	900100	Up to 5	470	483	540	240	12	3.3L	330 Grams	18L	3/4" BSP	1/2"	2 x 15mm Hoses	YES	40 °C	6/1 Bar
Softline® 450	900117	Up to 11	573	503	580	330	24	9L	330 Grams	24L	3/4" BSP	1/2"	2 x 22mm Hi Flo Hoses	N/A	40 °C	6/1 Bar

ELECTRIC METERED



54 Softline® 100 Code: 900216

- 240v 50hz mains transformer
- 10 litre resin volume
- Family size: Up to 5 people
- Dimensions: 545H x 460D (485D with connectors) x 275W
- Regeneration time: 42 minutes
- Salt used during regeneration: 1500 grams
- Water used during regeneration: 53 litres
- Maximum/Minimum working pressure: 1.5/8 bar
- Maximum temperature: 40°C
- 3/4" BSP inlet/outlet connections
- 1/2" drain and overflow connections



55 Softline® 200 Code: 900230

- 240v 50hz mains transformer
- 15 litre resin volume
- Family size: Up to 7 people
- Dimensions: 600H x 460D (485D with connectors) x 275W
- Regeneration time: 46 minutes
- Salt used during regeneration: 2200 grams
- Water used during regeneration: 59 litres
- Maximum/Minimum working pressure: 1.5/8 bar
- Maximum temperature: 40°C
- 3/4" BSP inlet/outlet connections
- 1/2" drain and overflow connections

	Softline® 100	Softline® 200	Softline® 150	Softline® 450
Max softened water capacity (litres)/Water efficiency at 200ppm	2500/2.1%	3750/1.6%	750/2.4%	2250/1.8%
Max softened water capacity (litres)/Water efficiency at 300ppm	1667/3.2%	2500/2.4%	500/3.6%	1500/2.7%

For Commercial Softeners call the Technical Helpline on 07990 064096

WATER SOFTENER ANCILLARIES



56 15mm Standard Installation Kit
Code: 900803



57 22mm Hi-Flow Hoses (x2)
Code: 900858



58 Combi Installation Kit
Code: 900827



59 22mm Hi-Flow Installation Kit
Code: 900810



60 Water Hardness Test Strips – 6 Pack
Code: 901008

For the elimination of problems associated with limescale in hard water areas



Reliable and economical!

All Scalemaster® Softline® Water Softeners carry a **FULL** 5 year parts *and* labour warranty.

CARBON NEUTRAL - Scalemaster® Softline® Water Softeners use less than 4% water for the regeneration cycle making them carbon neutral (as defined in the 'Code for Sustainable Homes').



SOFTLINE® DOMESTIC FILTER HOUSINGS

**61 10" Filter Housing**

- ¾" Ports

Code: 901107

**62 10" Filter Housing**

- ¼" Ports

Code: 901206

**63 10" Duplex Filter Housing**

- ¾" Ports

Code: 901220

SOFTLINE® DOMESTIC DRINKING WATER FILTER KITS

**64 Crystal Drinking Water Kit**

- Includes taste & odour filter
- Includes 901268 touchtap

Code: 901169

**65 Crystal + Drinking Water Kit**

- Twist Connect System
- Includes taste & odour filter
- Includes 901268 touchtap

Code: 901183

**66 10" Housing Drinking Water Kit**

- Includes 10" Carbon Block Filter
- Includes 901268 touchtap

Code: 901213

**67 Blue Tubing**

- 6mm outer diameter
- 2 metres

Code: 901275

**68 Long Reach Touchtap**

- 6mm outer diameter
- 2 metres

Code: 901268

SOFTLINE® DOMESTIC REPLACEMENT 10", CRYSTAL & CRYSTAL + FILTERS

**SEDIMENT 10" CARTRIDGES****69 0.3 Micron**

- 12 month life

Code: 901237

70 5 Micron

- 12 month life

Code: 901244

71 25 Micron

- 12 month life

Code: 901251

72 Carbon Block

- 6 month life
- Capacity 20,000 litres

Code: 901114

73 GAC/Phosphate

- 12 month life
- Capacity 20,000 litres

Code: 901121

74 Ceramic

Code: 901138

75 Crystal

Code: 901176

76 Crystal +

Code: 901190

		Bad Taste Removal	Chlorine Removal	Scale Removal	Sediment Removal	Scum Removal	Lead Reduction	Bacteria Removal	Cyst Removal	Organic Chemical Removal	Pesticide Removal
69/70/71	Sediment				•						
72	Carbon Block	•	•		•					•	•
73	GAC/Phosphate	•	•	•	•	•				•	•
74	Ceramic							•	•	•	•
75	Crystal	•	•	•	•						
76	Crystal +	•	•	•	•						

To improve the taste and
odour of your drinking water



Good For Health!

Water is essential for health and maintaining good hydration is increasingly being recognised as important for mental and physical performance. Filtering tap water is generally considered beneficial if it makes you feel more positive about drinking it!*

*See ukwta.org/technology-areas/filters-membranes/ for more information





77 CondenseMaster

Application: For neutralising acidic flue gas condensate discharging from high efficiency boilers.

Features: Suitable for all domestic condensing boilers up to 35kW.

Product Life: 12 month (may be reduced where condensate is highly acidic)

Fitting Location: Install vertically in plastic pipework carrying condensate from boiler waste water drain.

Fitting Type: 22mm Speedfit®.

Working Media: Calcined $\text{CaCO}_3/\text{MgOH}$.

Size (Length x Diameter): 238mm x 42mm.

Body Material: ABS

Precautions: DO NOT allow to freeze.

Code: 600703



78 External Leak Sealer - for central heating systems (50g)

Application: For sealing small leaks on all types of joints and fittings. Ideal for temporary repairs. Cures in 1 hour.

Precautions: Not suitable for use with bitumen or felt. Avoid contact with chrome-plated and gold-plated decorative fittings.

Code: 500843



WRAS
APPROVED
PRODUCT

79 Masterflux (250g)

Application: Flux soldering paste suitable for all gas and water capillary joint applications.

Features: Heat activated, self-cleaning, pH neutral, chloride free.

Approvals: WRAS approved for use on hot and cold water pipework, including potable water systems.

Code: 700021



80 Heating System Water Quality Check Kit

Physical properties measured: Colour, pH, conductivity, hardness and alkalinity (as CaCO_3).

Elements analysed: Chloride, sulphur, sodium, potassium, molybdenum, boron, phosphorous, zinc, copper & aluminium.

Code: 505992



81 Enzyme-Based Sink & Drain Unblocker 750ml

An effective enzyme-based treatment for breaking down organic debris and unblocking sinks and drains.

Code: 507026

82 Enzyme-Based Drain & Toilet Cleaner 1ltr

An effective enzyme-based treatment to clean and eliminate unwanted odours.

Code: 507033

83 General Purpose Descaler 250ml

A multi purpose, biodegradable, phosphate-free, rapid action descaler.

Code: 507019

LimeStop!



84 LimeStop! SLS8 Code: 902210

85 LimeStop! SLS12 Code: 902234

86 LimeStop! SLS15 Code: 902258

Salt-free limescale prevention for whole house protection.

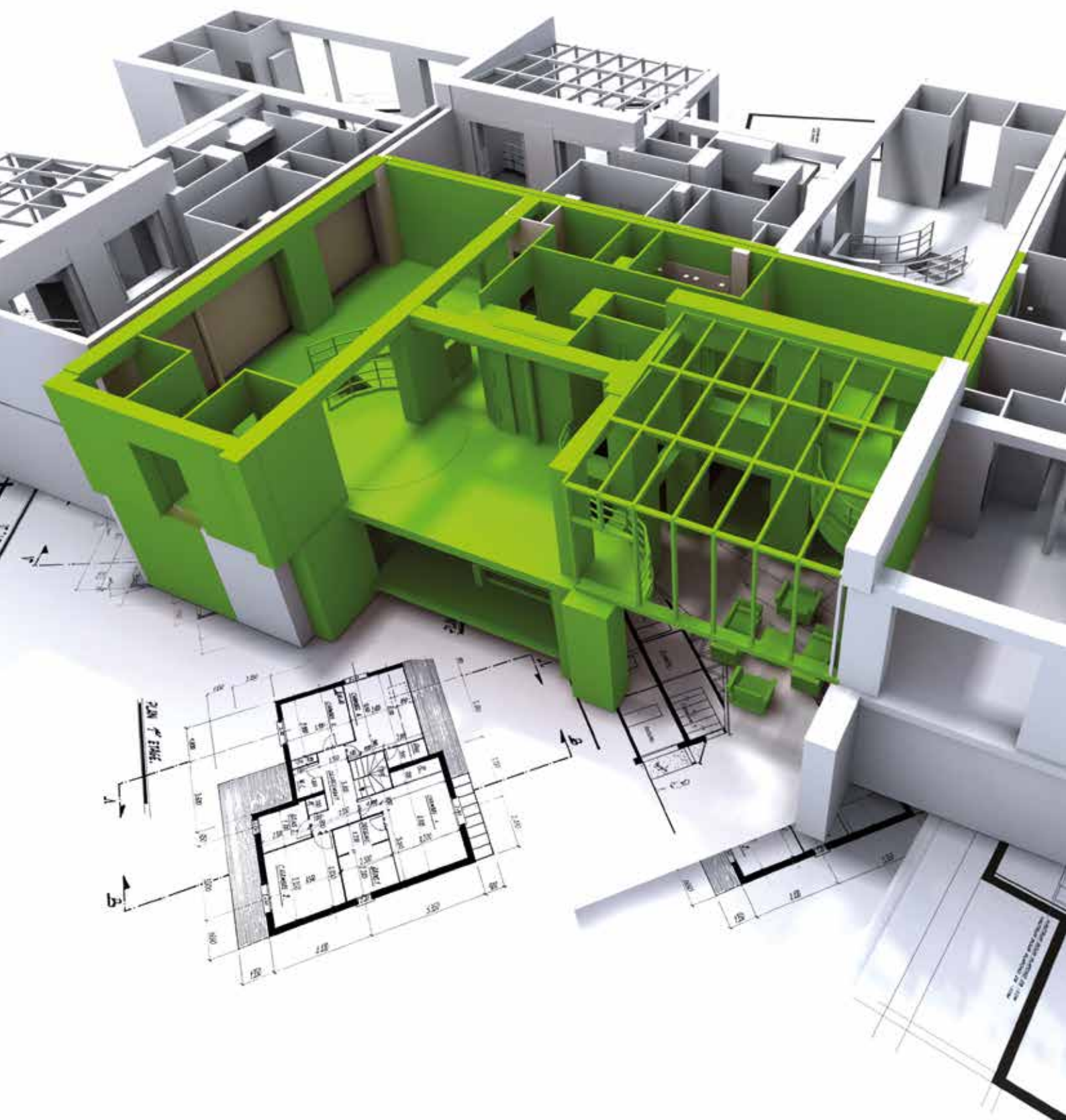
The easy way to eliminate and prevent scale build up 24 hours a day, 7 days a week, without the use of a water softener.

To keep water heating appliances and equipment in *tip-top* condition

Minimising Environmental Impact

Scalemaster® offers a range of services and technologies for easy, regular checking of water quality to ensure that equipment is maintained in top condition. Maximising performance results in energy savings and extended appliance life.





Commercial Scale Inhibitors



07 28mm Electrolytic (see also page 4)
Code: 402031



87 35mm Electrolytic
Code: 402048



88 42mm Electrolytic
Code: 402055



89 54mm Electrolytic
Code: 402062

When hard water is heated to temperatures above 40°C, the temporary hardness present begins to precipitate as limescale. Scalemaster® Electrolytic products operate as a galvanic cell increasing the concentration of dissolved zinc in the water. This has the effect of suppressing scale formation and forcing the limescale crystals which form, to have a needle-like structure (Aragonite), rather than form as more normal, smaller cubic (Calcite) crystals. It is more difficult for Aragonite to adhere to surfaces and the precipitating scale is washed away by the water flow.

Fitting Location: Incoming cold water mains supply.

Position: As close as possible to stopcock and before first draw off.

Power Source: Not required.

Operating Information: Designed for cold water application temperature 1°C - 40°C. Do not allow to freeze. Pressure tested to 14 bar. Maximum working pressure 8 bar.

Site Requirements: All work should be carried out by a suitably qualified person and must comply with all water byelaws.

Approvals: Scalemaster® Electrolytic products are WRAS approved and comply with the requirements of the United Kingdom Water Regulations/Byelaws.

For Commercial
Scale Inhibitors to fit
up to 18" diameter
pipework contact the
Technical Helpline on
07990 064096

	Commercial			
Pipe Diameter (mm)	28	35	42	54
Max Flow Rate (litres/min)	63	79	95	250
Fitting Type	Compression			
Body Material	Copper	Copper	Copper	Copper
Length (mm)	276	262	262	360
Diameter (mm)	42	108	108	108
Earth Bonding Required	No	No	No	No
Guarantee (years)	3	3	3	3
Power Required	No	No	No	No

Ultra Violet Water Disinfection Systems

UV Disinfection technology is widely used around the world to ensure safe water, free from bacteria, without the use of chlorine or other chemicals thereby eliminating the risk of overdosing or imparting bad taste.

The Scalemaster® range of UV systems all utilise low pressure mercury vapour discharge lamps to produce UV light at 254nm wavelength (UVC) which is lethal to micro-organisms. The stainless steel chamber incorporates a high purity quartz sleeve around the lamp. As water passes through the chamber, UVC light penetrates and destroys the cell structure of micro-organisms in the water.

Installation is simple. Once fitted the system requires only periodic attention to clean or replace the ultra-violet tube. Due to efficient design and the use of high quality components, running costs are extremely low and the lamp only requires annual replacement. The chamber is manufactured from hygienic 316L grade stainless steel ensuring strength, reliability and efficient water flow.



All commercial systems are different - Call the technical helpline 07990 064096 for help in choosing the correct system

Reverse Osmosis

Reverse Osmosis is a process in which dissolved inorganic solids are removed from water. This is accomplished by the water pressure forcing the water through a semi-permeable membrane. The membrane, which is about as thick as cellophane, allows only water to pass through, not impurities or contaminants. The impurities and contaminants are flushed to drain.



	Reduces Turbidity	Improves Colour	Improves Taste	Improves Odour	Removes Chlorine	Removes Bacteria	Removes Lead & Heavy Metal	Removes Nitrate / Nitrite	Removes Pesticides	Removes Drugs
Sediment Filter	•									
Granulated Carbon Filter		•	•	•						
Carbon Block		•	•	•						
R.O. Membrane						•	•	•	•	•
Post Carbon Filter		•	•		•					
Ultraviolet						•				

Calcium Treatment Units (CTU)

An extremely effective range of systems designed to reduce limescale and improve the taste of incoming feed water to most commercial water heating and cooking equipment.

Black /Blue - 2 Port

Typical uses include coffee machines, water boilers and bulk brewers. The 2 port head drilled head (2PDR) has a single inlet and single outlet. The integral bypass allows a blend of untreated water to pass through, to improve taste, colour and odour, and increase capacity.

We recommend... The level of temporary water hardness of the mains should be recorded, a pressure limiting device and a water meter should be fitted; units should be sized for 6 months use. (where possible); equipment manufacturers recommendations should be checked and vessels should be flushed (5bv) to clear carbon fines.



NEW CTU UNITS (BLACK / BLUE 2 PORT)		DIAMETER	HEIGHT
CTU5	CTU System (capacity 2,850 Litres approx)	170mm	380mm
CTU10	CTU System (capacity 7,300 Litres approx)	222mm	490mm
CTU18	CTU System (capacity 14,600 Litres approx)	263mm	530mm
CTU23	CTU System (capacity 17,000 Litres approx)	263mm	630mm
CTU30	CTU System (capacity 28,450 Litres approx)	263mm	950mm

NEW CTU UNITS (BLACK / BLUE 2 PORT)	
CTU5R	Regenerated CTU System (capacity 2,850 Litres approx)
CTU10R	Regenerated CTU System (capacity 7,300 Litres approx)
CTU18R	Regenerated CTU System (capacity 14,600 Litres approx)
CTU23R	Regenerated CTU System (capacity 17,000 Litres approx)
CTU30R	Regenerated CTU System (capacity 28,450 Litres approx)

ANCILLARIES	
	Water meter 3/4" male connections

To Treat
Water Over
180ppm
Hardness



All commercial systems are different - Call the technical helpline 07990 064096 for help in choosing the correct system

Commercial Water Softeners



When considering water softeners in the commercial environment it's important to know the facts. Hard water costs public and private sector organisations £millions each year in:

- Higher maintenance costs caused by clogged-up pipes, pumps and appliances
- Premature replacement of equipment, appliances and machinery
- Replacement of linens, towels and other laundry
- Higher heating and energy bills

To help save cost, time and energy, Scalemaster® Commercial Water Softeners are widely used in commercial applications such as:

- Hotels and guest houses
- Restaurants, cafés, pubs and bars
- Hospitals, dental surgeries and health centres
- Health clubs, swimming pools and leisure centres
- Office and apartment blocks
- Car washes and dry cleaners

Once installed, a water softening system will save energy, plumbing repairs and general maintenance. You can extend the life of laundry, fixtures and appliances. You can save on chemicals and detergents. Your customers will also enjoy softer towels, cleaner glassware and better-tasting water.

All commercial applications are different. The expert Scalemaster® team will attend site and carry out a free survey to ensure you get the right equipment for the job.



All commercial systems are different - Call the technical helpline 07990 064096 for help in choosing the correct system



Scalemaster®, Softline® and i-Mag® are registered trademarks of Scalemaster Limited

Emerald Way, Stone Business Park,
Stone, Staffordshire, ST15 0SR, England

Tel: 01785 811636 Fax: 01785 811511

Technical Helpline: 07990 064096

info@scalemaster.co.uk www.scalemaster.co.uk

 ScalemasterH20  @ScalemasterH20